

Conference Venue

Haus der Kirche
Evangelische Akademie Baden
Dobler Str. 51
D-76332 Bad Herrenalb
Tel.: (07083) 928-0
Fax: (07083) 928-601
E-Mail: HausderKirche@hdk.ekiba.de
URL: www.ev-akademie-baden.de/haus/

Location



By public transport

Take tram S1 leaving in front of Karlsruhe Main-Train-Station to Bad Herrenalb (duration about 30 minutes) once an hour. Upon arrival in Bad Herrenalb, you can take a taxi or even walk to the conference venue (5-10 minutes).

By car

Karlsruhe - Ettlingen - Bad Herrenalb. In the center of Bad Herrenalb turn left to the direction of Dobel (Pforzheim). The conference venue is then located about 500m on your left.

Organizers

Prof. Dr.-Ing. habil. Thomas Böhlke
Chair for Continuum Mechanics
Institute of Engineering Mechanics
Karlsruhe Institute of Technology (KIT)
Germany

Prof. Dr.-Ing. habil. Rolf Mahnken
Chair of Engineering Mechanics (LTM)
University of Paderborn
Germany

Contact

Prof. Dr.-Ing. habil. Thomas Böhlke
Institute of Engineering Mechanics
Karlsruhe Institute of Technology
Kaiserstr. 10
D-76131 Karlsruhe
Germany
Tel.: (0721) 608 46107
Fax: (0721) 608 44187
E-Mail: composite2012@itm.kit.edu
URL: www.itm.kit.edu/cm/

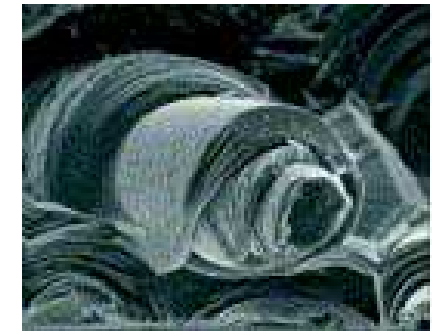
Karlsruhe Institute of Technology
Institute of Engineering Mechanics



University of Paderborn
Chair of Engineering Mechanics



25th International Workshop Research in Mechanics of Composites



Dec. 6-7, 2012
Bad Herrenalb, Germany



Objective of the Workshop

Modern and classic composites display a macroscopic material behavior depending on their nanostructure, microstructure, and mesostructure in a complex way. The mechanisms and size scales relevant for the macroscopic material behavior depend, among others, on the mechanical or physical sizes considered and on the thermomechanical process conduct. Understanding the correlation of both the microstructure and micromechanical behavior and the macroscopic material behavior of components is of fundamental interest for a number of composite utilization problems such as the selection and the design of materials as well as the dimensioning and optimization of construction parts.

In this workshop, new approaches for the material modeling of composites are introduced and discussed with respect to the multiscale properties of the material type. This workshop serves young researchers and well-established scientists to discuss their research experiences and allows for interdisciplinary discussions covering the fields of applied mathematics, mechanics and materials science.

Time Table

Dec. 5, 2012	18:00h	Informal meeting and Registration
Dec. 6, 2012	08:30h	Workshop
Dec. 7, 2012	11:30h	Final discussion
Dec. 7, 2012	12:30h	Lunch

Key Subjects

- Ceramic-matrix and carbon-carbon composites
- Curing and performance of polymer-matrix composites
- Metal-matrix composites
- Micromechanics
- Methods of homogenization
- Mechanical and thermal behaviour
- Description of microstructures
- Evolution of microstructures
- Thermomechanical coupling
- Damage, fatigue and fracture
- Experimental methods
- Numerical techniques

Abstracts

The abstract (max. 250 words, LaTeX) should be submitted to composite2012@itm.kit.edu latest by **November 25, 2012**. For the corresponding template, please refer to www.itm.kit.edu/cm/

Deadlines

- Submission prelimin. title: Oct. 31, 2012
- Notification of acceptance: Nov. 06, 2012
- Abstract submission: Nov. 25, 2012
- Registration: Nov. 15, 2012
- Conference fee: Nov. 15, 2012
- Workshop: Dec. 6-7, 2012

Registration

by **E-Mail** until **November 15, 2012**

- Title, Name, First Name
- Institution
- Postal address
- Tel.-/Fax-No.
- E-Mail

to composite2012@itm.kit.edu.

Registration-Fee

Please transfer the amount of **EUR 300,00** (registration fee, including accommodation, meals, abstract band) by **November 15, 2012**, latest, to the following account:

-
- Deutsche Bundesbank, Filiale Karlsruhe
 - Recipient: KIT, Amtskasse Campus Süd
 - Account-No.: 6600 1508
 - Bank Number: 660 000 00
 - BIC / SWIFT: MARK DE F1660
 - IBAN: DE 5766 0000 0000 6600 1508

- Designated use:
 1. Name of participant(s)
 2. Composite2012
 3. In favor of project: XD 20348 71051
-